



UNITED CONSTRUCTION SERVICES

Lead Service Line Replacement Program

United Construction Services, LLC ("UCS") will be replacing lead, brass and galvanized steel service lines at discounted or **no cost** to the homeowner as part of various "Lead Free DC" programs. The steps below describe the process of getting your lead service line replaced.

Lead and galvanized pipe should be replaced to minimize lead exposure and maintain good water quality

1. UCS will schedule a day where they will come into your home and inspect the material of the customer-owned side of the service line, which is located on your property.



2. They will need to see the pipe that enters the water meter, which is probably in your basement.



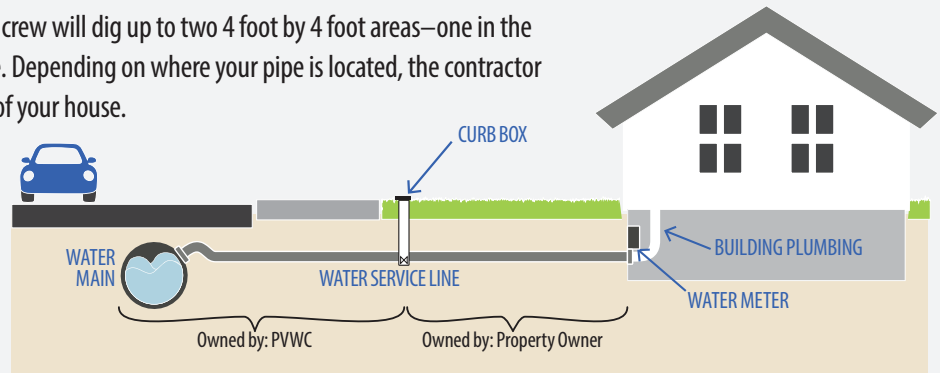
3. To see the material of the **public** side of the service line, a contractor will dig a small test hole in the front of your home, near the side walk. The hole will be temporarily patched, and restored at a later date.



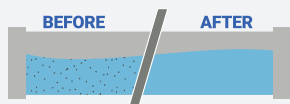
4. If the service line material is brass, lead or galvanized steel at either location, you are eligible to get your lead service line replaced.

5. To get to the pipes underground, the contractor and crew will dig up to two 4 foot by 4 foot areas—one in the street and one at the curb in the area near the test hole. Depending on where your pipe is located, the contractor may also have to dig a small hole near the foundation of your house.

6. UCS will replace the old service line with a new copper service line. The new service line will be connected to the water main in the street at one end and your house plumbing at the other end.



7. UCS tests the new pipe and runs water through it to flush out debris and lead particles.



8. UCS will temporarily patch holes in the yard, sidewalk and street to allow for settling. The holes in the yard will then be restored to pre-work conditions with seeding, concrete, or paving.



Temporary asphalt repair patch in street and/or sidewalk after service line replacement.



Permanent sidewalk repair at the curb stop.



Temporary backfilled holes in your yard are filled with soil and left to settle.



Final yard seeding occurs 3-4 months after the initial patch, weather and season permitting. Water seeds for best results!

9. Once the pipe is replaced and water is back on, turn on all the cold faucets in your building. Start with the faucet at the lowest level and work your way up to the highest level. **This will flush all of the water pipes in your building.**

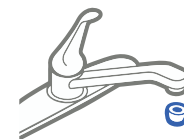


After 30 minutes of flushing the cold water, shut off faucets, starting at the highest point and working your way down.

REMEMBER: Always use cold water from the tap for drinking, cooking, and preparing baby formula



Don't forget bathtubs!



FAUCET AERATOR

After flushing, remove faucet aerators and clean out any particles. The aerator is usually at the tip of the faucet and can be screwed off to clean.

LEAD SERVICE LINE LOOK UP: Find out if you have a lead service line bringing water into your home by visiting [www.https://www.dwater.com/lead](https://www.dwater.com/lead)

QUESTIONS: ☎ 202-459-4668- Main
202-748-4723- Tech

✉ lead.service@unitedconstructionservicesllc.com